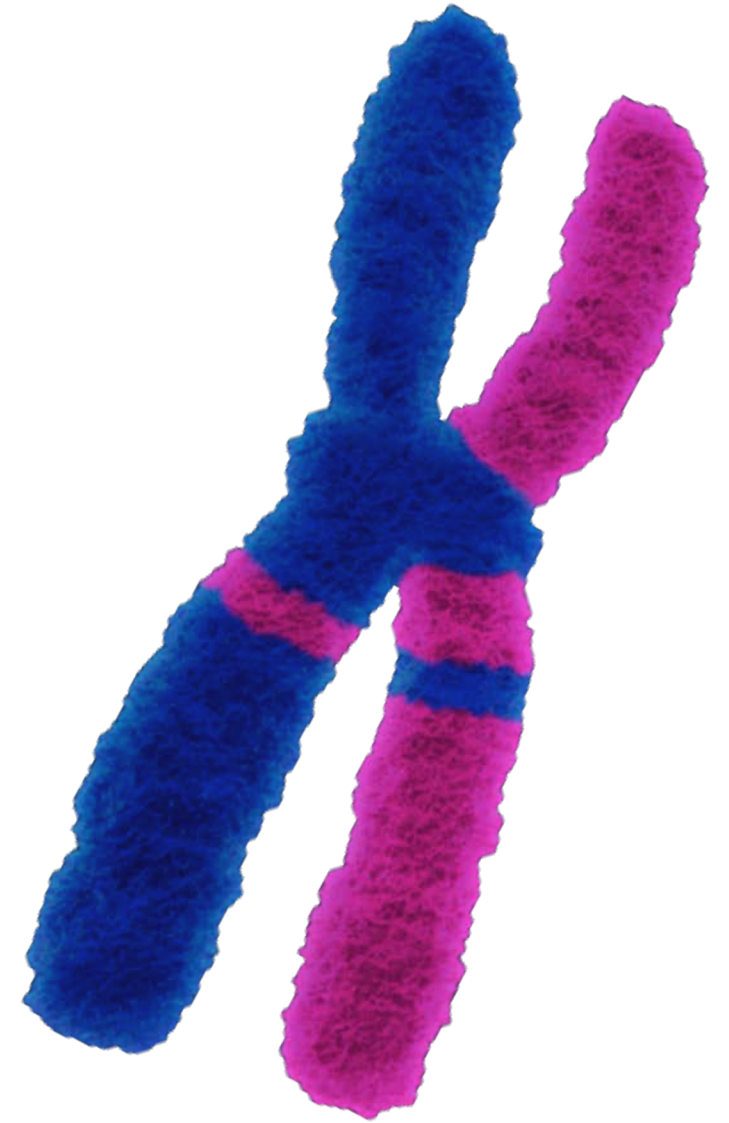


G-Banding





Who We Are

A team of scientists, engineers and business leaders passionate about directly imaging DNA structure at the lowest possible limit of detection on a single cell basis. Our Focus:

Innovation

- Quantifying location, orientation, size of variants by direct imaging
- Pushing lower the limits of detection with increasing signal strength
- AI automation of imaging and scoring to provide at attractive cost and turn-around time

Execution

- Creating custom assays & probe designs to answer R&D questions
- Supporting GLP Tox Studies/IND filings via structural analysis
- Assuring cell line genomic stability and clonal selection
- Executing assays for clients in rapid fashion

Cytogenetics Support

- Provide routine cytogenetics & related testing

Comprehensive, High-Definition Genomic Structural Measurements

How are Others Using KromaTiD?

Chromosomal rearrangements and genomic structural measurements

Genome Engineering

- Research
- Process Development
- Preclinical Development
- (Clinical)



Cell Line Selection

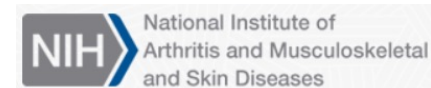
- Genome integrity
- Cell line QC

Pre-Existing Variation

- Structural biomarker/target discovery
- Biodosimetry



Applied StemCell



KromaTiD

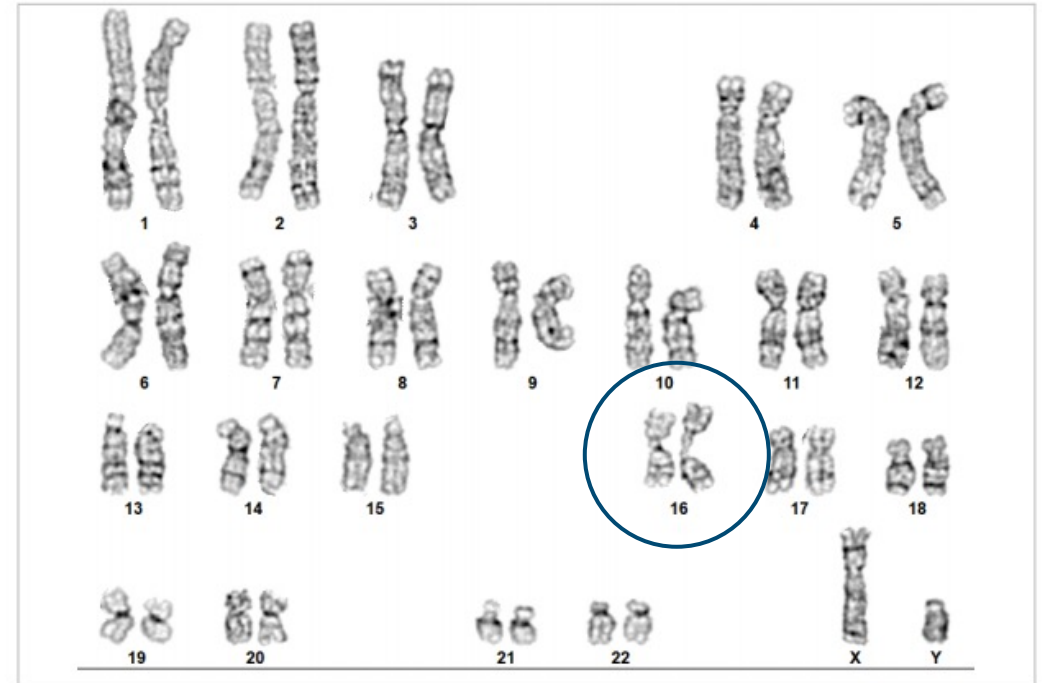
Direct, Definitive Genomics

G-banding Confirms Gross Ch16 Result

1. Some rate of potential intra-chromosomal CNV (band expansions) was observed
2. None of the recurrent inversions were detected
3. Instability and gross rearrangement of C16 matched dGH SCREEN observations



46,XY,chr(1)(q10)[1]/
46,XY,dic(16;17)(p13.2;p13),?add(16)(p)[1]/
46,XY,del(16)(q10),?add(16)(p)[2]/
46,XY,?add(16)(p)?iso(16)(q10)[5]/
46,XY[11]



Cell Results: Karyotyped: 46,XY,?add(16)

Cell Notes: Estimated Band Resolution:675



Label - Slide/Cell: S002692 - 8/52

X,Y: 9.9, 20.2

Working with KromaTiD is Easy



Example workflow with KromaTiD running in-Site or alternative assay on engineered lines in house

KromaTiD is committed to **collaborative excellence** through dedicated project management and **expert technical analysis**.

Pricing Information

- 200 spreads per sample counted: \$4000 per sample
- 20 spreads per sample counted: \$600 per sample
- Culture development (Thaw, recovery, and harvest optimization): \$300 per sample
- Cell culture and harvest: \$300 per sample

Thank You..

For additional information, please visit us at www.kromatid.com