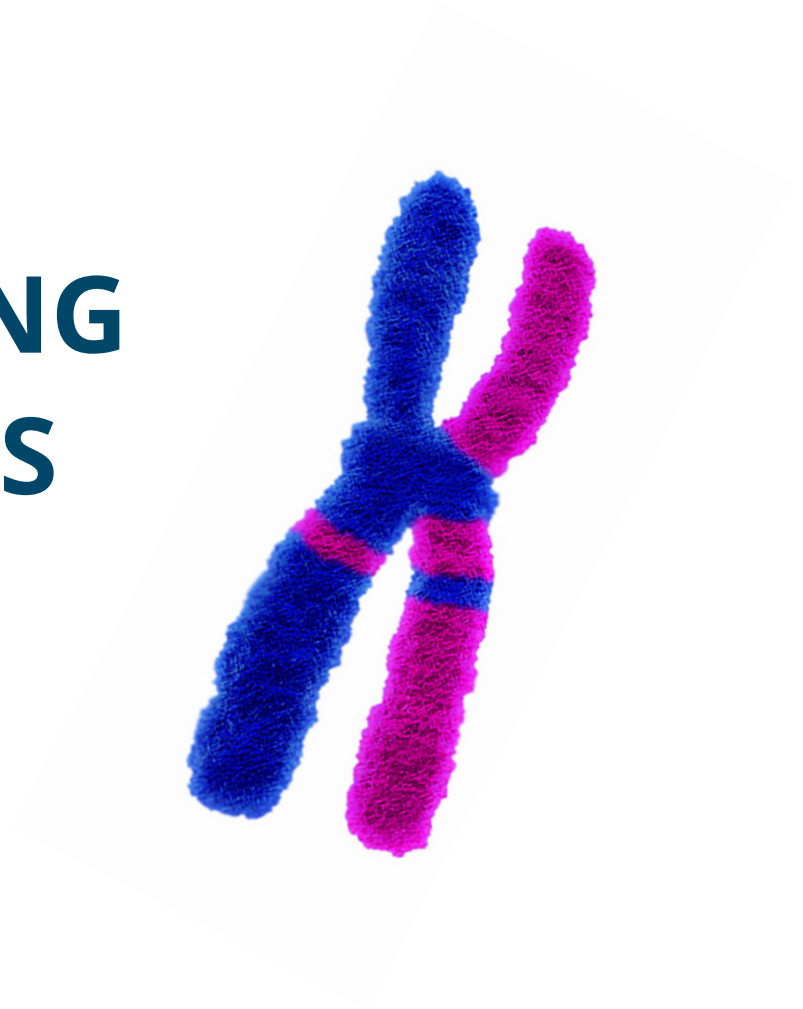


# G-BANDING SERVICES





**KromaTiD**  
Direct, Definitive Genomics

## Who we are

A team of scientists, engineers and business leaders passionate about directly imaging DNA structure at the lowest possible limit of detection on a single cell basis.

## Innovation

- Quantifying location, orientation, size of variants by direct imaging
- Pushing lower the limits of detection with increasing signal strength
- AI automation of imaging and scoring to provide at attractive cost and turn-around time

## Execution

- Creating custom assays & probe designs to answer R&D questions
- Supporting GLP Tox Studies/IND filings via structural analysis
- Assuring cell line genomic stability and clonal selection
- Executing assays for clients in rapid fashion

## Cytogenetics Support

- Provide routine cytogenetics & related testing

**Comprehensive, High-Definition Genomic Structural Measurements**

# How are others using KromaTiD?

## Chromosomal rearrangements and genomic structural measurements

Genome Engineering

Cell Line Selection

Genome Structure

Research  
Process Development

Preclinical/Clinical  
Development

Genome integrity

Cell line QC

Structural biomarker discovery  
Structural target discovery

Biodosimetry

# G-Banding Confirms Gross Ch 16 Result

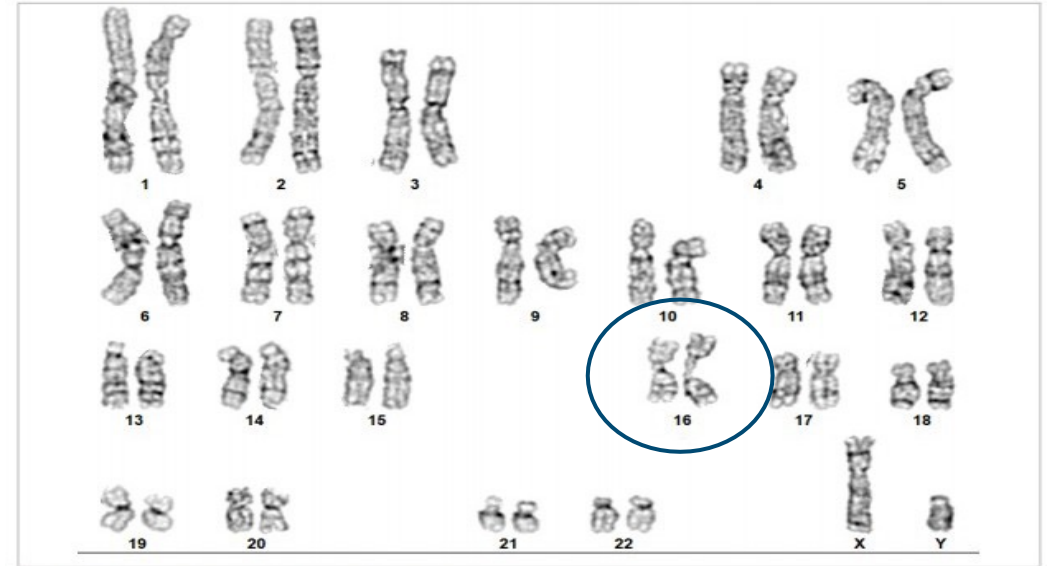
1. Some rate of potential intra-chromosomal CNV (band expansions) was observed
2. None of the recurrent inversions were detected
3. Instability and gross rearrangement of C16 matched dGH SCREEN™ observations

46,XY,chr(1)(q10)[1]/

46,XY,dic(16;17)(p13.2;p13),?add(16)(p)[1]/46,XY,d  
el(16)(q10),?add(16)(p)[2]/

46,XY,?add(16)(p)?iso(16)(q10)[5]/

46,XY[11]



Cell Results: Karyotyped: 46,XY,?add(16)

Cell Notes: Estimated Band Resolution:675

Label - Slide/Cell: S002692 - 8/52



X,Y: 9.9 , 20.2

**KromaTiD**

Direct, Definitive Genomics

# G-Banding Pricing

SKU	Product Description	List Price
CYT-001	G-Banding Adherent/Suspension Cell Culture Development: Thaw, recovery, and harvest optimization	\$600.00
CYT-005	G-Banding T-Cell Culture Development: Thaw, recovery, and harvest optimization	\$900.00
CYT-006	G-Banding iPSC Cell Culture Development: Thaw, recovery, and harvest optimization	\$1,000.00
CYT-007	G-Banding Whole Blood Culture Development: Thaw, recovery, and harvest optimization	\$550.00
CYT-002	G-Banding Assay Execution and Analysis: Imaging and scoring for 20 spreads/sample	\$750.00
CYT-003	G-Banding Assay Execution and Analysis: Imaging and scoring for 200 spreads/sample	\$5,000.00
CYT-004	G-Banding Assay Execution and Analysis: Imaging and scoring for 50 spreads/sample	\$1,562.50
CYT-012	G-Banding Assay Execution and Analysis: Imaging and scoring for 100 spreads/sample	\$3,100.00
CYT-008	G-Banding Adherent/Suspension Metaphase Prep and Harvest	\$600.00
CYT-009	G-Banding T Cells Metaphase Prep and Harvest	\$700.00
CYT-010	G-Banding iPSC Metaphase Prep and Harvest	\$800.00
CYT-011	G-Banding Whole Blood Metaphase Prep and Harvest	\$550.00

# Working with KromaTiD is Simple




Example workflow with KromaTiD running in-Site or alternative assays on engineered lines in-house.

KromaTiD is committed to **collaborative excellence** through dedicated project management and **expert technical analysis**.

 Customer

 KromaTiD

 KromaTiD and Customer

**KromaTiD**  
Direct, Definitive Genomics



Thank you!  
To inquire and for orders visit: [kromatid.com](http://kromatid.com)  
Email: [sales@kromatid.com](mailto:sales@kromatid.com)