

## Pinpoint FISH™ DNA Probes

Pinpoint FISH™ DNA probes are composed of synthetic oligonucleotides designed to provide the brightest signals and lowest background of any FISH probes on the market.

The high signal-to-noise ratio of these probes compared to standard FISH probes simplifies analysis, reduces time-to-results and provides higher-confidence data.

Designed with proprietary bioinformatic software, Pinpoint FISH™ probes allow researchers to multiplex freely without cross-hybridization to generate custom data sets that address their unique scientific questions.

### Key Benefits

- Competitive pricing
- Bright signals, low background
- No off-target binding
- Can multiplex with commercial FISH probes
- Higher resolution than BAC probes

### FISH Applications

Pinpoint FISH™ DNA probes can be used for any FISH application including:

- Serving as control signals for a companion probe
- Identifying or enumerating chromosomes
- Tracking targets undergoing complex rearrangements
- Detecting deletions, translocations, inversions and aneuploidies

KromaTiD can produce custom PPF probes for any target in any sequenced mammalian genomes (e.g., human, mouse, canine).

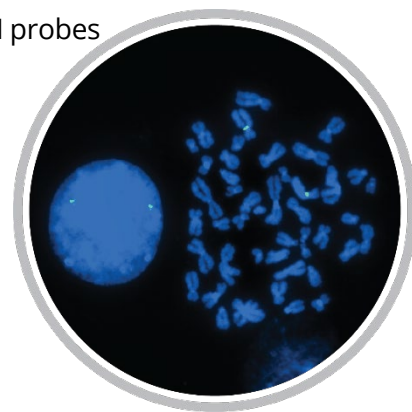


Figure 1: Pinpoint FISH™ probe labeled in green targeting pericentromeric region of chromosome 4 in a metaphase cell and an interphase cell.



Figure 2: Pinpoint FISH™ small-target (~10kb) transgene probe in a metaphase cell.

## Equipment and Sample Requirements

Pinpoint FISH™ probes are designed for use with standard FISH consumables and workflows, requiring no special training or equipment. Compatible sample types include hematologic, cell line and solid tissue cells from any mammalian species.

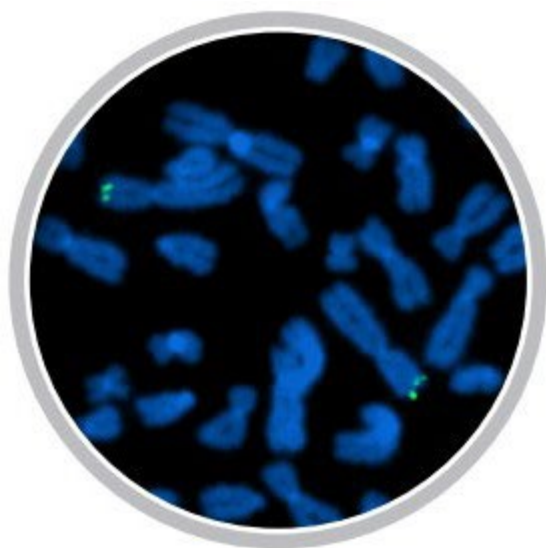


Figure 3: Pinpoint FISH™ probe labeled in green targeting genomic DNA adjacent to telomere of chromosome 2 p-arm.

## Pinpoint FISH™ Probe Pricing

Conjugated to	Size	List Price
Atto550/Spectrum Orange	10 tests	\$155.00
TexRed	10 tests	\$145.00
6-FAM/Spectrum Green	10 tests	\$145.00
Atto643/647/Cy5	10 tests	\$155.00
Atto425/Aqua	10 tests	\$155.00
FISH Hybridization Buffer	10 tests	\$5.00

Find the complete lists of Pinpoint FISH Probes and pricing on our website:

[Subcentromere \(subCEP\) Pinpoint FISH Probes](#)

[Subtelomere Pinpoint FISH Probes](#)

For more information on KromaTiD Pinpoint FISH DNA probes, please contact  
[sales@kromatid.com](mailto:sales@kromatid.com)