

Standard and Affordable Plasmid Services

PlasmidPros provides a research service to manufacture your plasmid DNA by doing Maxi, Mega and/or Giga preps in as little as 72 hours. The purified plasmid DNA is resuspended in buffer and sent back to your lab.

Key Benefits

- Economically priced Maxi, Mega and Giga plasmid preps
- Typical turn-around of 72 hours
- Two antibiotic selection choices, Carbenicillin or Kanamycin
- Two resuspension buffers, water or 10mM Tris pH 8.0
- Easy-to-use online ordering system at PlamidPros.com

Contact Us

The Pros are here to answer your questions!

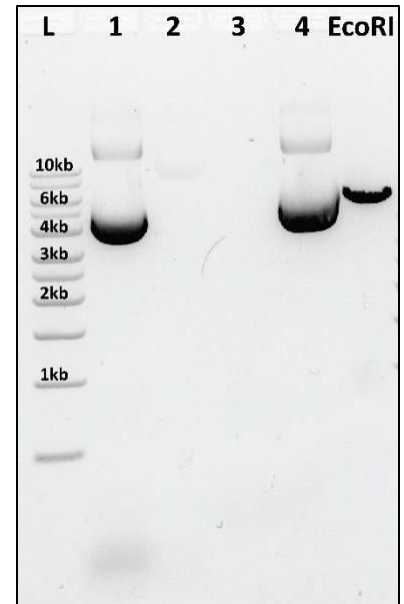


Figure 1. Analytical check of plasmid purification, pAAV-GFP. L: ladder, 1: cleared lysate, 2: lysate flow-through, 3: wash flow-through, 4: eluate, EcoRI: enzymatic digestion.

Order Here

Sample#	Sample Name	Specifications	Preps	Total Price
1	<input type="text" value="Enter Sample Name"/>	Scale <input type="text" value="v"/> Resistance <input type="text" value="v"/> Buffer <input type="text" value="v"/>	- 1 +	ADD TO CART
2	<input type="text" value="Enter Sample Name"/>	Scale <input type="text" value="v"/> Resistance <input type="text" value="v"/> Buffer <input type="text" value="v"/>	- 1 +	ADD TO CART
3	<input type="text" value="Enter Sample Name"/>	Scale <input type="text" value="v"/> Resistance <input type="text" value="v"/> Buffer <input type="text" value="v"/>	- 1 +	ADD TO CART
4	<input type="text" value="Enter Sample Name"/>	Scale <input type="text" value="v"/> Resistance <input type="text" value="v"/> Buffer <input type="text" value="v"/>	- 1 +	ADD TO CART
5	<input type="text" value="Enter Sample Name"/>	Scale <input type="text" value="v"/> Resistance <input type="text" value="v"/> Buffer <input type="text" value="v"/>	- 1 +	ADD TO CART

How It Works

3 Scales to Match Your Requirements

MAXI	MEGA	GIGA
\$115 Typical yield: 1 mg	\$280 Typical yield: 4 mg	\$485 Typical yield: 10 mg

PlasmidPros make prep easy and fast.



STEP 1 SHIPPING

Send us your samples using the shipping instructions provided.

STEP 2 TRANSFORMATION

We transform your 1µg DNA sample using a concentration of at least 20 ng/µl into the DH5alpha strain of E.coli at 37°C.

STEP 3 CLONE SELECTION

We plate transformed cells on agar plates that contain the antibiotic to which the plasmid confers resistance.

STEP 4 GROWTH/HARVEST

Culture grow overnight at 37°C in secure, controlled-setting shaker. When ready, we harvest them by centrifugation.

STEP 5 LYSIS/PURIFICATION

Harvested cell paste goes through an alkaline lysis event, and is purified.

STEP 6 UV SPECTROSCOPY

We resuspend the pure plasmid DNA in a set volume of either water or 10 mM Tris at a pH 8.0. Our UV spectroscopy reports the concentration and OD 260/280 ratio of the plasmid on the label of the final deliverable vial.

STEP 7 RECEIVE FINISHED SAMPLES

Receive your finished preps, ready to use.