

Project Quote#:

YYMMDD

Specimen:

iPSC

LIMS ID:

S#####

Received Date:

MM/DD/YYYY

Customer Sample ID:

"Customer Name from Sample Submission Form"

Completed Date:

MM/DD/YYYY

Gender:

Male

Band Resolution:

425

Total Counted:

20

Total Analyzed:

20

Final Karyotype:

46,XY[20]

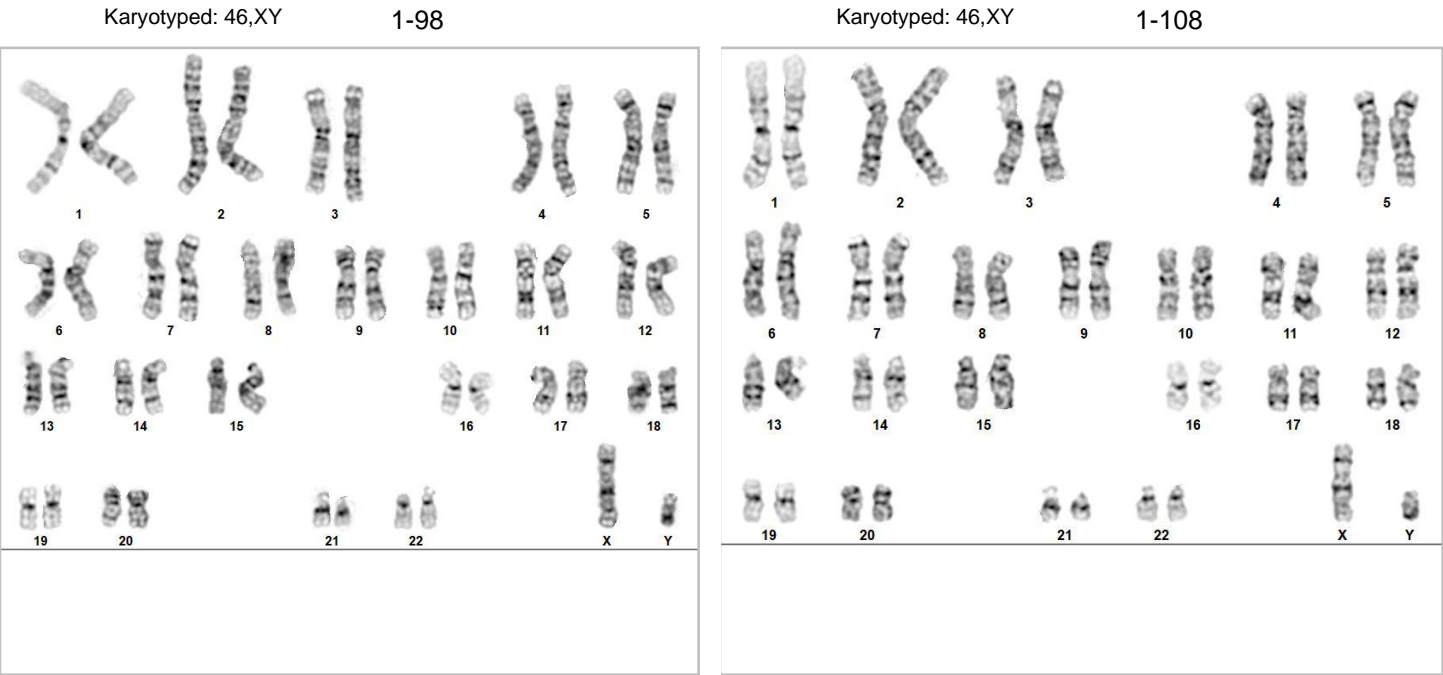
Case Notes:

G-banded chromosome analysis of metaphase cells designated "Customer Sample Name" (KromaTiD Sample ID S#####) shows a normal male karyotype.  
The other abnormalities/aberrations detected were non-clonal and were designated as low-level mosaicism or random gain/loss.

Karyotype Summary:

Karyotype:	# Cells
46,XY	18
45,XY,-10	1
45,XY,-16	1

Cells Images: (Example images of the Final Karyotype)



*Limitations: This assay allows for microscopic visualization of numerical and structural chromosome abnormalities. The size of structural abnormality that can be detected is >3-10Mb, dependent upon the G-band resolution obtained from this specimen. For the purposes of this report, band level is defined as the number of G-bands per haploid genome. Detection of heterogeneity of clonal cell populations in this specimen is limited by the number of metaphase cells analyzed, documented above as "number of cells counted". Results are for Research Use Only and should not be used for clinical purposes.*

**Completed By/Date:**

**Name of Report Creator**

**Technical Expert**

**Approved By/Date:**

**Name of Reviewer**

**Quality Team Member**