

dGH in-Site™ CAR-T Kit Overview



KromaTiD

Direct, Definitive Genomics

dGH in-Site™ CAR-T Kit Overview

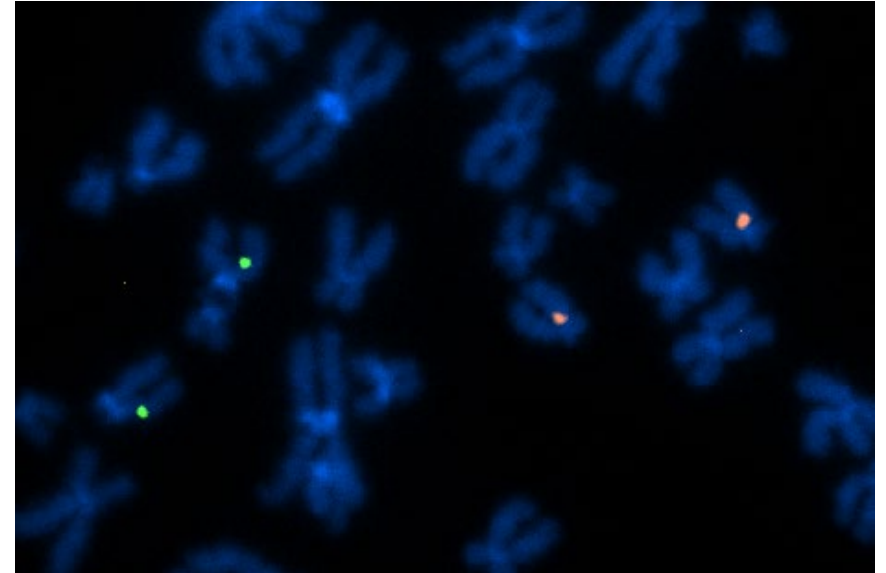
Track the sequence, location and orientation of your CAR-T genomic loci, in a single test.

Technical features

- Provides single-cell data
- Cell prep method yields single-stranded metaphase chromosomes
- Ultra-high resolution, as low as 2 Kb
- A baseline view of structural variation in engineered T cell products

Benefits

- High signal-to-noise ratio boosts scoring confidence and efficiency
- Direct visualization of double strand misrepairs
- Orthogonal and complementary to sequencing and G-banding
- Works with standard cytogenetic equipment and workflows
- Expert support from KromaTiD scientists on sample processing and image analysis



GM12753 control lymphoblastoid cell line targeted by dGH™ probes for TRAC (Tex Red) and B2M (6-FAM) loci.

dGH in-Site™ CAR-T Kit

Track the sequence, location and orientation of your CAR-T genomic loci in a single test.

The dGH CAR-T Kit provides the **most detailed and sensitive analysis** of **localized genome edits** available.

By adding the CAR-T Kit to your analytical suite you will get a truly comprehensive characterization of your engineered T cell products.

dGH in-Site™ CAR-T Kit

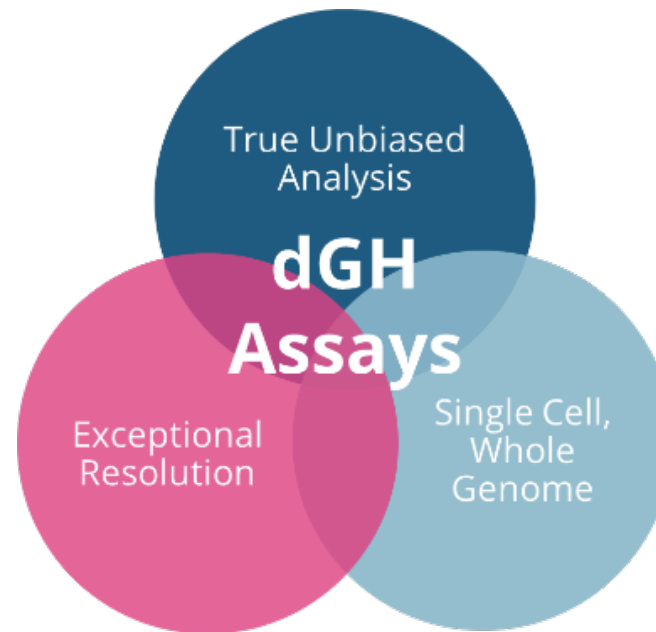
10 Assays \$1,500

Contents

dGH Probe TRAC TexRed
dGH Probe B2M 6-FAM/Spectrum Green
dGH Hybridization Buffer



KromaTiD
Direct, Definitive Genomics



dGH in-Site™ CAR-T Kit Bundle

10 Assays \$2,799

Contents

dGH Probe TRAC TexRed
dGH Probe B2M 6-FAM/Spectrum Green
dGH Hybridization Buffer
dGH Cell Prep Additive 250 µL
Demecolcine 2.5 ml
White Glove Tech Transfer Support

Custom dGH™ CAR-T Probes for Kits



dGH in-Site™ probe for PDCD1 labeled with Atto550 on GM12753 control lymphoblastoid cell line.

Fluorophore	dGH Probe	Excitation/Emission (nm)
6-FAM / Spectrum Green	B2M	490 / 525
Atto550 / Spectrum Orange	OPEN	555 / 576
Texas Red	TRAC	595 / 620
Atto643 / 647 / Cy5	Insert Probe	643 / 669

- Custom CAR tracking probes can be made for your specific target insert.
- Probes for CIITA and PDCD1
- Control mock CAR tracking probes



Custom probe additions require customized specifications. Please email sales@kromatid.com

dGH at a Glance

Track the sequence, location and orientation of your CAR-T genomic loci in a single test.



The dGH method of cell preparation yields single stranded metaphase chromosomes.



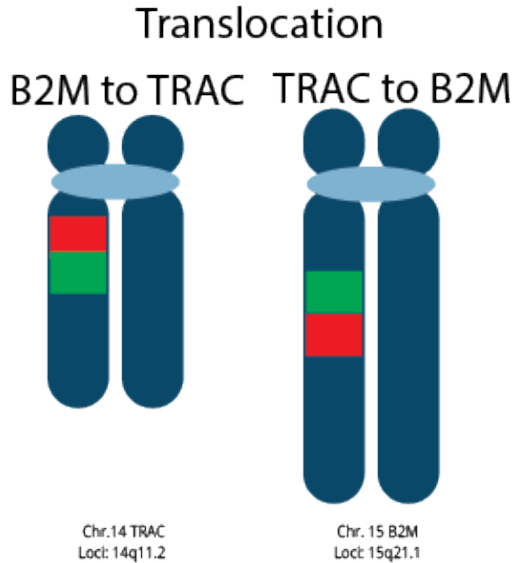
This allows direct visualization of editing outcomes including orientation and balanced/unbalanced structural variants.



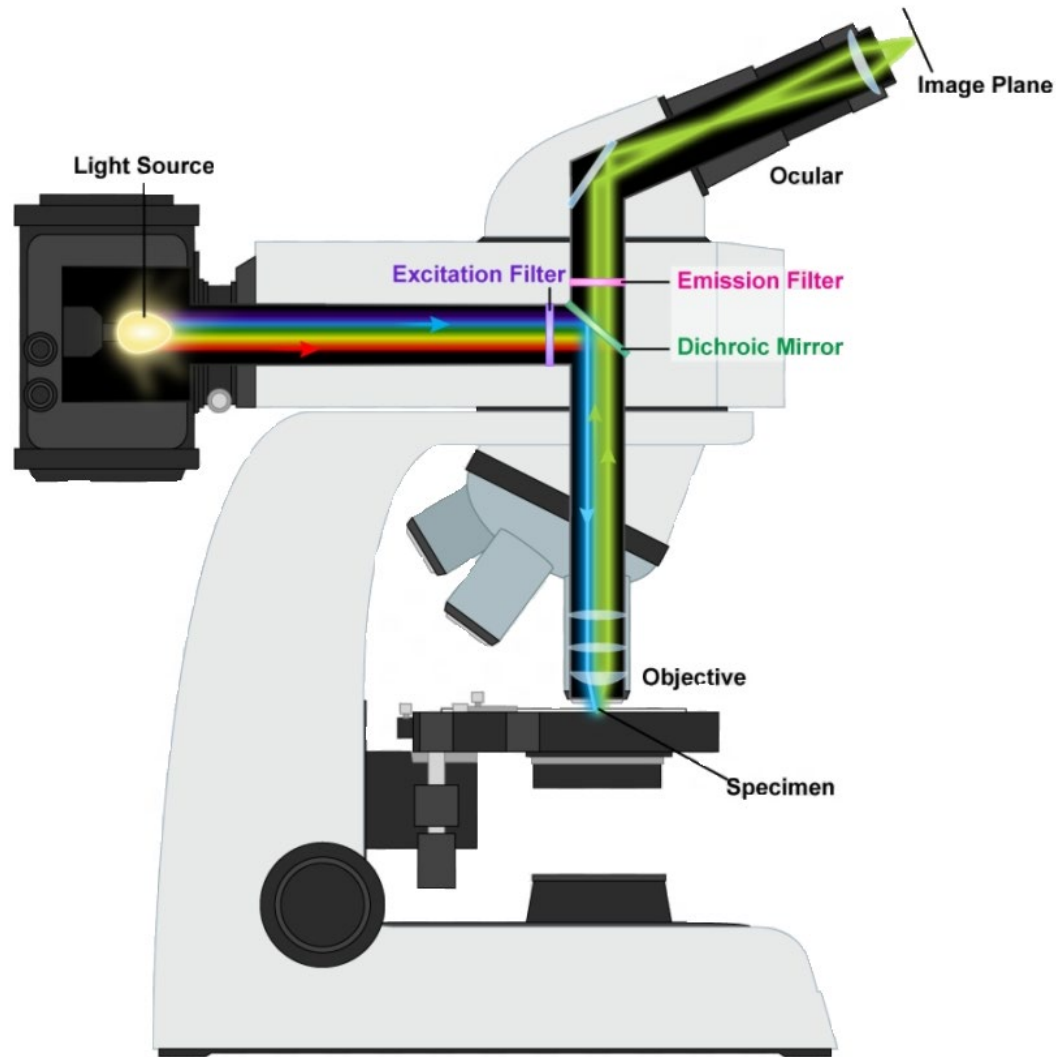
Our dGH single-stranded probes are comprised of tiled oligonucleotides that provide a high-resolution, localized view of CAR-T edits.



Abnormal signal patterns are easy to locate and visualize.



Microscope Requirements to Run dGH™ Assays in Your Lab



Light Source: Two options

- Broad spectrum white light
- Multiple LED and/or laser sources.

Filter Cubes:

- Filters with Excitation/Emission wavelength values corresponding to the fluorophore(s) of the probes to be used.

Objective Lens:

- 60X to 100X magnification
- Oil immersion
- High Numerical Aperture (NA)
- NA of 1.4 is recommended

Camera: Monochrome CMOS or sCMOS

Tech Transfer Support for dGH in-Site Assays

KromaTiD offers expert technical assistance and consulting every step of the process.

Overall Assay Design

- Total spread count
- Regulatory considerations
- Custom probe design
- Specific loci to target

Slide Dropping and dGH Sample Preparation

- Cell pellet concentration
- Humidity and temperature
- UV exposure specifics

Image Analysis

- Scoring template
- Signal pattern interpretation
- Metaphase selection and morphology

Cell Culture and Harvest

- dGH Cell Prep Additive
- Colcemid™ and harvest time points

Slide Scanning

- Optics and hardware
- Illumination
- Light filter cubes

Data Management

- Working with the scoresheet
- Planning efficient data collection

dGH Hybridization


- Hybridization and multiplexing



Technical Support Information

Phone: 720-815-2901

Email: techsupport@kromatid.com

Website Chat : M-F 9:00am-5:00pm MST

Thank you!



KromaTiD

Direct, Definitive Genomics

For Research Use Only. Not for use in diagnostic procedures.



to inquire and for orders
visit: kromatid.com
or contact: sales@kromatid.com

www.kromatid.com