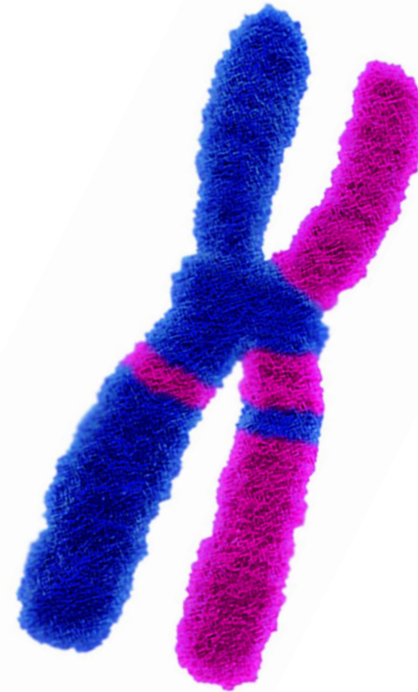


# G-BANDING SERVICES



**KromaTiD**

Direct, Definitive Genomics



**KromaTiD**

Direct, Definitive Genomics

## Who We Are

A team of expert scientists providing unparalleled genomics tools, services and support.

### Your partner for

- Biomarker discovery
- Target validation: gene editing outcome analysis
- Genomic integrity assessments
- Plasmid manufacturing

### Our Products

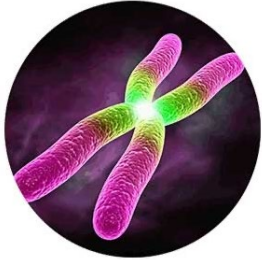
- Patented directional Genomic Hybridization™ (dGH™) technology
- An extensive collection (>900) of chromosome probes and paints
- Improve the sensitivity and specificity of your FISH assays

### Our Services

- FISH assays utilizing our patented Pinpoint FISH™ and dGH™ technology
- Plasmid manufacturing (RUO, pre-GMP & cGMP)
- G-Band karyotyping
- Cell culture

# What We Provide

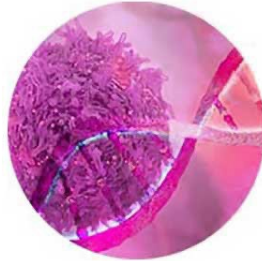
## Products



[Centromere Probes](#)



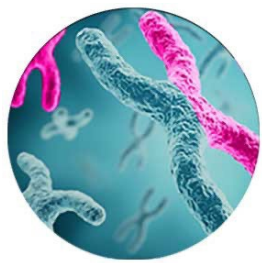
[Subtelomere Probes](#)



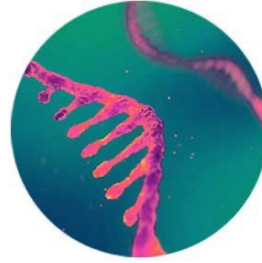
[Oncology Probes](#)



[Pinpoint FISH™ Kits](#)



[Whole Chromosome Paints](#)



[dGH Cell Prep Kit](#)

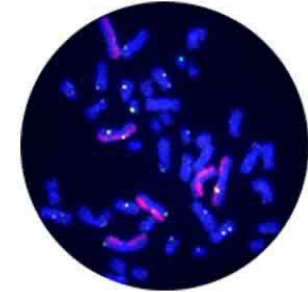
## Services



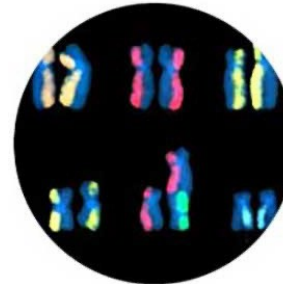
[Cell Culture Services](#)



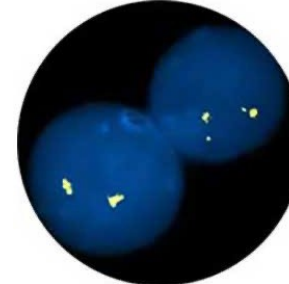
[G-banding Services](#)



[dGH in-Site™ Targeted Assays](#)



[dGH SCREEN™ Unbiased Assays](#)



[Pinpoint FISH™ Assay Services](#)



[Plasmid Manufacturing Services](#)

**KromaTiD**

Direct, Definitive Genomics

# How are others using KromaTiD?

## Chromosomal rearrangements and genomic structural measurements

**Genome Engineering**

**Cell Line Selection**

**Genome Structure**

**Research  
Process Development**

**Preclinical/Clinical  
Development**

**Genome integrity**

**Cell line QC**

**Structural biomarker discovery  
Structural target discovery**

**Biodosimetry**

# G-Banding Confirms Gross Ch 16 Result

1. Some rate of potential intra-chromosomal CNV (band expansions) was observed
2. None of the recurrent inversions were detected
3. Instability and gross rearrangement of C16 matched dGH SCREEN™ observations

46,XY,chbr(1)(q10)[1]/

46,XY,dic(16;17)(p13.2;p13),?add(16)(p)[1]/46,XY,del(16)(q10),?add(16)(p)[2]/

46,XY,?add(16)(p)?iso(16)(q10)[5]/

46,XY[11]



Cell Results: Karyotyped: 46,XY,?add(16)

Cell Notes: Estimated Band Resolution:675

Label - Slide/Cell: S002692 - 8/52



X,Y: 9.9 , 20.2

**KromaTiD**

Direct, Definitive Genomics

# G-Banding Service Pricing

Catalog Number	Services	Cost
CYT-002	G-Band Imaging and Scoring, 20 cells per sample,	\$788
CYT-004	G-Band Imaging and Scoring, 50 cells per sample	\$1,640
CYT-012	G-Band Imaging and Scoring, 100 cells per sample	\$3,255
CYT-003	G-Band Imaging and Scoring, 200 cells per sample	\$5,250
CYT-015	G-banding QC Assessment per sample	\$625
CYT-005	G-Banding T-Cell Culture Development: Thaw, recovery, and harvest optimization	\$1,238
CYT-009	G-Banding T Cells Metaphase Prep and Harvest	\$1,238
CYT-006	G-Banding iPSC Cell Culture Development: Thaw, recovery, and harvest optimization	\$1,375
CYT-010	G-Banding iPSC Metaphase Prep and Harvest	\$1,375
CYT-007	G-Banding Whole Blood Culture Development: Thaw, recovery, and harvest optimization	\$757
CYT-011	G-Banding Whole Blood Metaphase Prep and Harvest	\$757
CYT-014	G-Banding NK Cell Culture Development: Thaw, recovery, and harvest optimization	\$1,238
CYT-013	G-Banding NK Cells Metaphase Prep and Harvest	\$1,238
CYT-020	G-Banding Genomic Integrity Report	\$1,600

**KromaTiD**

Direct, Definitive Genomics



# Working with KromaTiD is Simple



Example workflow with KromaTiD running in-Site or alternative assays on engineered lines in-house.

KromaTiD is committed to **collaborative excellence** through dedicated project management and **expert technical analysis**.

# Why You Win With Us



**Collaboration:** The trusted structural genomics partner for leading gene therapy innovators

---

**Performance:** Gold standard products for the measurement of genomic structure and structural variation

---

**Scalability:** End to end process automation, high-throughput analysis, AI meta-analysis

---

**Excellence:** Experienced team of 20 operating today in a world class, 11,000 square foot genomics facility

---

**Proprietary:** Issued patents, broadened applications, trade secret methods, proprietary bioinformatics



# Thank you!

